

Our Responsible Research and Innovation (RRI) vision for the SHARED GREEN DEAL project

SHARED GREEN DEAL consortium partners have jointly reflected and agreed on a shared vision of how to integrate principles of Responsible Research and Innovation (RRI) into their activities and work processes within the SHARED GREEN DEAL project. This shared RRI vision outlines our understanding of RRI and the benefit we expect from integrating RRI into work in the SHARED GREEN DEAL project. We aim to implement our project in a way that supports reflection within the team on our approaches and raises awareness for crosscutting issues. For us, RRI can become a powerful tool to achieve the expected impacts of SHARED GREEN DEAL.

This vision includes the guiding principles for the interaction of the consortium members and between the consortium members and partners, stakeholders, and participants in the project and thus offers practical guidance how to 'do' RRI in the end.

Why are we using Responsible Research and Innovation (RRI)?

- We want to produce **research results** that are relevant and useful for society. With our project, we aim to provide solutions for societal challenges and help better implement the European Green Deal.
- We are using RRI to **change our research processes**. RRI allows exploring new interaction practices and test them during the SHARED GREEN DEAL project. These practices, if proven useful, can be further embedded into our research and organisations in the future.
- We encourage a **critical approach to RRI**. While using RRI in our project, we will tailor it to our need and make sure it is used in a way to strengthen the SHARED GREEN DEAL project. We aim at spreading our lessons learnt also to other research projects especially linked to the Green Deal.

What does responsibility mean for the consortium?

We structure our understanding of responsibility and our activities in the SHARED GREEN DEAL project based on the four process dimensions of RRI and their theoretical² and practical interpretations³. Responsibility in our day-to-day project work means to us:

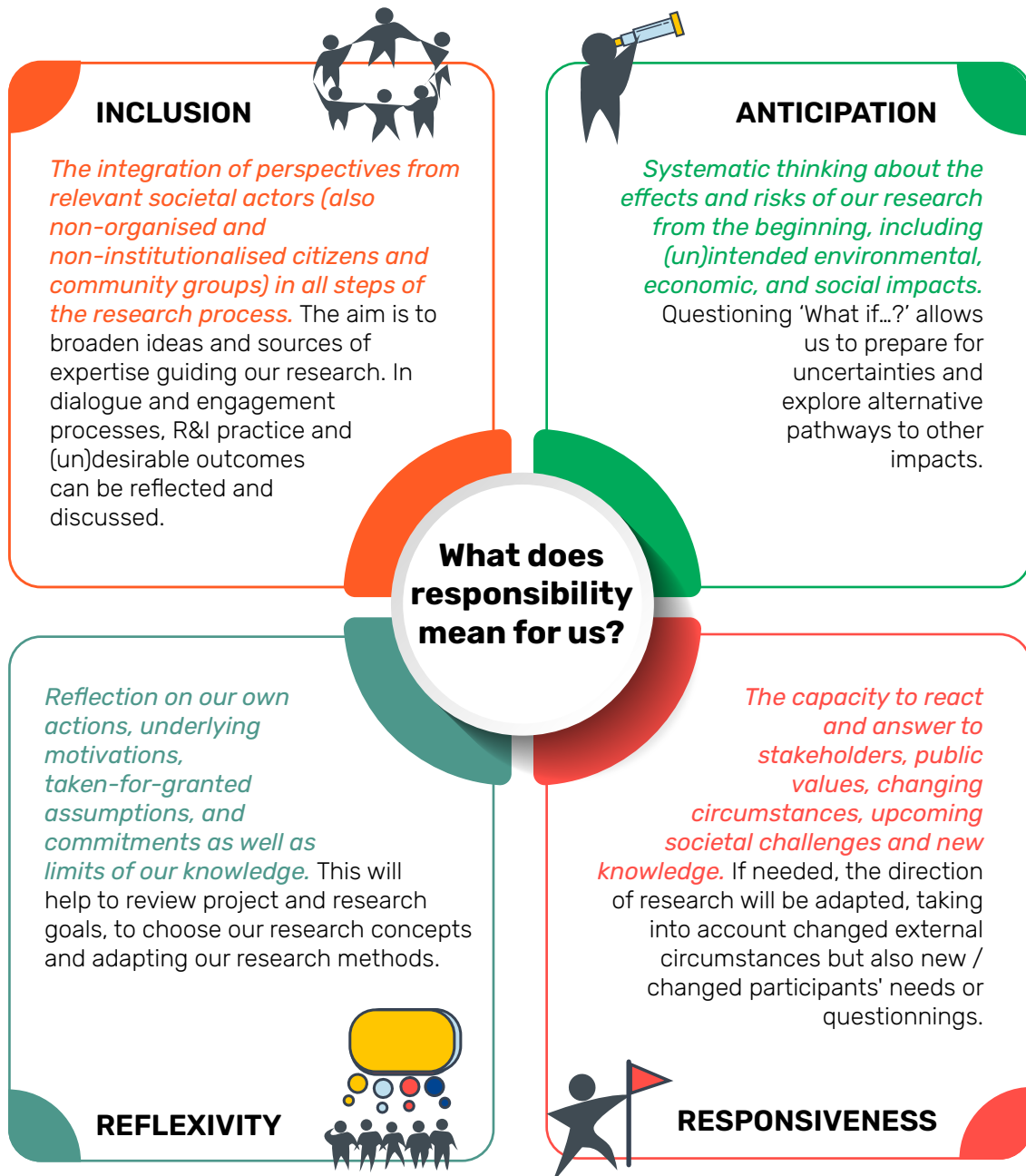


Figure 1. Four dimensions of Responsible Research and Innovation

- 1 Stilgoe, J., Owen, R., Macnaghten, P., 2013. Developing a framework for responsible innovation, *Research Policy*, 42(9), 1568-1680.
- 2 Owen, R., Macnaghten, P., Stilgoe, J., 2012. Responsible research and innovation: From science in society to science for society, with society. *Science and Public Policy*, 39(6), 751-760.
- 3 https://rri-tools.eu/about-rri?p_p_id=2_WAR_kaleodesignerportlet&p_p_lifecycle=0; <https://thinkingtool.eu/>; <https://www.rri-leaders.eu/co-creation-process/>

Guiding principles

In the following, we present a set of guiding principles which are derived from the above outlined shared understanding of our understanding of responsibility and the project's objectives to which RRI should contribute to. They have been derived from our common working sessions on RRI during the first Consortium Meeting, February 2022.⁴ These principles are fundamental to our research practice as well as to the interaction of the consortium members and between the consortium members and external partners:

We are committed to a socially and environmentally **sustainable research process**:

P1: We use **inclusive, just, and socially acceptable approaches, methods and tools**.

P2: We are **aware of past findings**.

P3: We discuss **how we can contribute** with our action to **sustainability transitions** and make use of this normative perspective. We look at the societal impacts of the project as enabling factors to this transitions.

P4: We reflect on which **stakeholder groups' perceptions are given priority in experiments** and consider **social inequalities**. **We ensure diversity and inclusivity** in the group of participants in our experiments.

P5: Working in different contexts, we take into account **local conditions** in our experiments and use coherent, context-specific specific principles shared by the participants of the experiments and seek a representation of **local actors**

P6: Using **RRI will be learning process** for all consortium members. We strive to build our capacities infor RRI and consider how best it can be applied in our project, while at the same time being aware of its boundaries.

P7: Applying a responsible and reflexive approach to research might generate **unforeseen and negative effects of our research**. We are prepared to address the unforeseen.

⁴ The content of these guidelines was wholly sourced inductively from the discussion with consortium partners during the first consortium meeting, February 2022. We only took the liberty to reorganise them in the following cluster and adjust wording. The first two clusters are of general nature and were key to a lot of consortium partners with regard to RRI and in general responsible project work. This is why they are named first. In order to align with the six EC RRI dimensions, the last four clusters are dedicated to the four RRI dimensions that are most relevant to the SHARED GREEN DEAL project.

We aim for **responsible internal project management**:

- P8:** We seek **reliability and accountability** in our project management, such as completing tasks on time and taking ownership of our work.
- P9:** We **acknowledge** our own and the team's work, pay attention to the **team's wellbeing** and cultivate **respectful and mindful interaction**.
- P10:** We are **aware of difficulties in the research practice**, like recruiting for the social experiments and have practical **alternative plans**. We acknowledge the **right to fail** in reaching the effects we have aimed for during the experiments and to commit ourselves **to reflect and draw conclusions** from unintended consequences. Being responsible also means being **flexible and adaptive to changes in our own processes**.
- P11:** We aim for a **clear set of measurements** and a transparent definition allowing to include RRI right from the start. Our measurements are **adaptable to the different disciplines** in the project, allow meaningful comparisons across the six streams and are quantitative as well as qualitative, according to the needs.
- P12:** We aim to contribute to **environmental sustainability** and use environmental friendly products and processes (e.g. travels) in our internal project management.

The European Commission understanding of RRI resonates also in the SHARED GREEN DEAL project. The following four dimensions are of particular relevance for the Share Green Deal project: Thus, we...

... are committed to **PUBLIC ENGAGEMENT**:

- P13:** We seek **transparency** on the project's goals and results as well as our interests and values.
- P14:** Our research results shall be **useful and usable by end users**. They should especially provide evidences for future policy making (of the Green Deal). Therefore we **actively involve external stakeholders – citizens and intermediate organisation** such as grassroots organisations or local administrations during the experiments and **policy makers** for the uptake of the project's results – in our research and pay attention to **balance different requirements**.
- P15:** We reflect regularly with participants on whether the **research is taking into consideration needs, concerns and values** of all participants.
- P16:** We ensure **equality of roles** between researchers, participants, stakeholders and further partners. This includes jointly discussing and elaborating (research') problem definition. We aim for **co-creation during the different stages of the research** process, not only at the end of the project.

... aim for **OPEN ACCESS** to our research and **DISSEMINATION** of our results to different societal stakeholders

P17: Research data and analysis are shared wherever useful to the research community and with sufficient anonymisation, explanations and metadata.

P18: Results are disseminated to a wider public in a sensitive but impactful way.

P19: We attach great importance to a simple understanding and practical use of our results, for example with easy-to-read and accessible publications and target-group adapted communications.

... comply with the standards of **research ETHICS** in our research work and collaborations internal and with external partners:

P20: This includes informed consent as well as **awareness of (our own) power positions** and possible biases.

P21: We agree on the formal ethic commitments that the consortium has subscribed to, in particular concepts such as anonymity and confidentiality of participants. We adhere to the internal work processes of quality review and internal deadlines.

P22: We think of possible unintended consequences and unforeseen future risks of our research and publications.

... recognise that **GENDER EQUALITY** adds value to research and innovation in terms of excellence, creativity, and societal relevance of the knowledge produced⁵:

P23: We promote equal opportunities for women and men and gender balance in the teams in academic and non-academic partner organisations

P24: We ensure the inclusion of women's expertise in the internal structures of the project including managing positions (WP leads), general assembly, and advisory boards.

P25: We aim to reflect on and integrate gender dimensions in the content of the project activities, identifying and addressing gender inequalities and needs in the context of the experimental streams.

P26: We acknowledge that gender interacts with other categories of identity and adopt an intersectional approach to issues of equity and justice.

⁵ Gender is a one of the key cross-cutting topics of the SHARED GREEN DEAL project. Thus, separate there is a separate gender action plan, gender guidelines and gender training. However, as gender is an integral part of RRI thinking, we chose to introduce it also here and to re-state its key principles.